

Auspuffdichtungen zwischen Krümmer - Sammler - Endtopf

Material: hitzebeständig, asbestfrei



Maßtabellen auf der nächsten Seite

V- Nummer = Lagerware

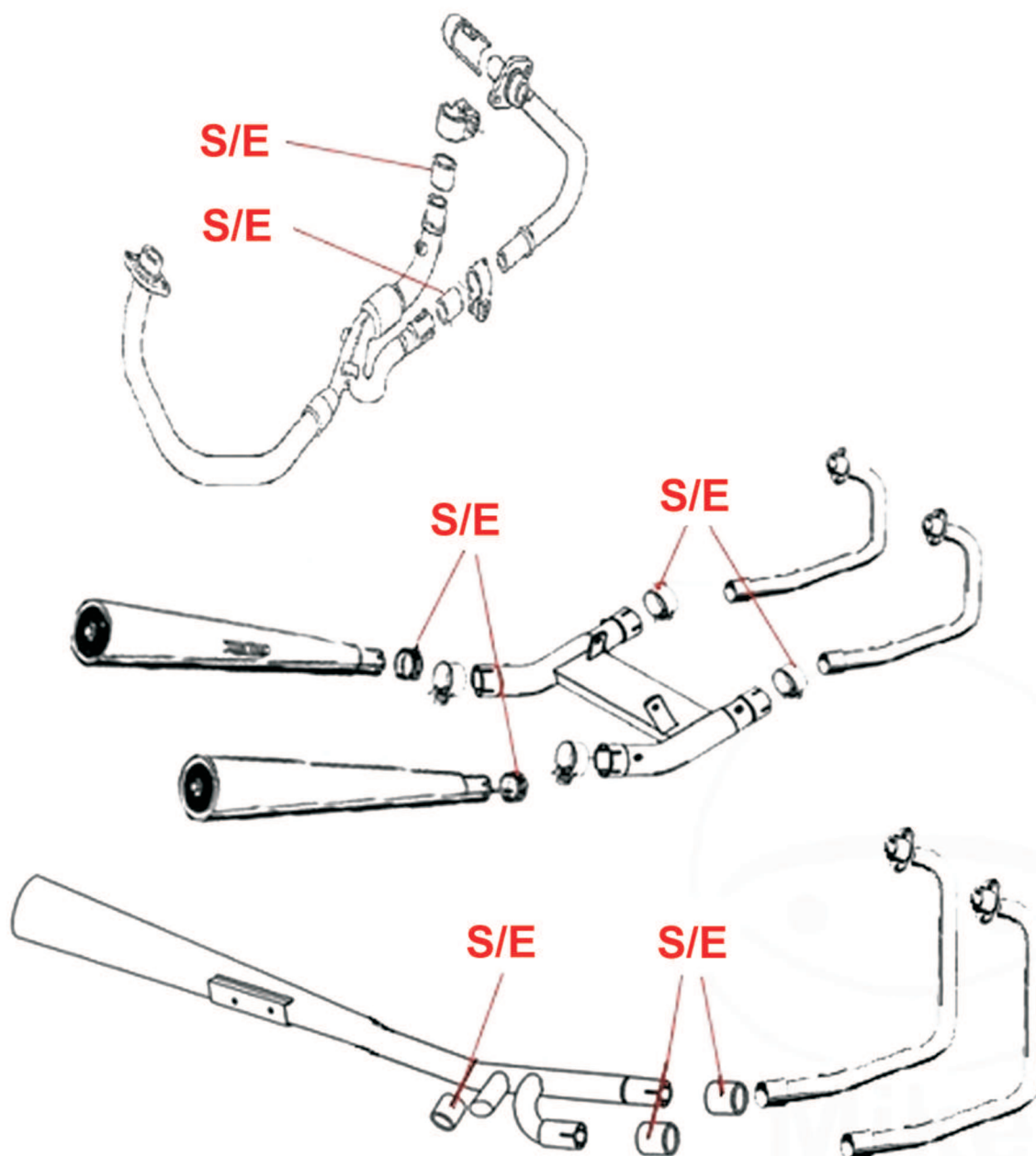
Rest auf Bestellung

d 1 = Innendurchmesser

d 2 = Aussendurchmesser

L = Länge

Abmessungen in mm



Best. Nr.	d1	d2	L
	22,0	26,0	25,5
V-14575	25,0	29,5	25,0
V-36821	25,0	31,5	25,0
V-25180	28,5	32,5	30,0
V-14576	28,5	34,0	34,0
	28,5	34,5	32,5
V-14577	29,0	34,0	20,0
V-36248	29,0	34,0	25,0
V-36292	29,0	35,0	25,0
V-35595	30,0	36,0	35,0
V-36804	32,0	34,5	26,0
V-36805	32,0	36,0	30,0
	32,0	37,0	20,0
V-14578	32,0	37,0	26,0
V-36822	32,0	37,4	25,0
V-14579	32,0	38,0	30,5
V-36823	32,0	39,0	25,0
V-25637	32,0	39,0	32,0
	35,0	38,0	25,0
V-23159	35,0	39,0	25,0
V-14580	35,0	39,0	32,0
V-14581	35,0	41,0	25,0
V-23470	35,0	41,0	30,0
	35,0	41,5	25,0
V-14582	35,0	42,5	23,0
V-36806	35,0	42,5	30,0
V-24837	37,0	42,0	10,0
V-14583	38,0	42,0	30,0
V-14584	38,0	43,0	26,0
V-36807	38,0	43,5	36,5
V-14585	38,0	44,0	20,0
V-22922	38,0	44,0	24,0
V-36824	38,0	44,0	26,0
V-14586	38,0	44,0	28,0
V-32669	38,0	44,0	30,5
V-03655	38,0	46,0	30,0
V-36808	39,0	42,0	29,0
V-36809	39,0	44,0	25,5

Best. Nr.	d1	d2	L
V-19000	40,0	44,0	24,5
	40,0	46,0	25,5
V-05953	40,0	46,0	30,0
	41,0	47,0	28,0
V-14587	41,0	47,0	32,0
V-27452	41,0	48,0	35,0
	41,0	48,5	32,5
	41,3	48,5	23,5
V-36810	41,3	48,5	27,0
V-14588	42,0	46,7	25,0
V-36825	42,5	48,3	25,0
V-36812	42,7	48,5	28,0
V-25424	43,0	46,7	30,0
V-14589	43,0	48,0	20,0
V-36811	43,0	48,0	25,0
V-14590	43,0	48,0	31,0
V.36826	43,0	48,5	26,0
V-14591	43,0	49,0	20,0
V-36813	44,0	50,0	30,0
	44,5	53,0	32,0
V-05955	45,0	50,0	30,0
V-14592	45,0	50,0	35,0
V-23292	45,0	51,0	20,0
V-36814	46,0	50,0	34,5
V-17930	46,5	55,0	25,0
V-36827	48,8	55,0	20,5
V-29472	48,8	55,0	28,5
V-36815	49,0	55,0	25,0
V-14593	49,0	55,0	30,0
V-36828	51,0	62,0	30,0
V-32573	51,5	58,0	30,0
	54,0	62,0	30,0
V-14594	54,5	60,0	27,0
V-36816	54,5	60,0	34,0
V-36817	60,0	69,0	35,0