

Regler für japanische Scooter

Fahrzeug	ccm	Bezeichnung	Bj.	Regler
HONDA				
FES	125			V-08139
NES	125			V-08139
NSR	125			V-08139
SH	125			V-08139
FES	250			V-08139
FES	250	W		V-08139
CH	250	Spacy		V-07354
SUZUKI				
AN	125			V-07355
CS	125			V-18635
TS	125	ERX		V-18635
UC	125			V-12817
AN	250			V-12817
UH	250			V-12817
AN	400			V-12817
YAMAHA				
YP	250			V-18096



V-07354



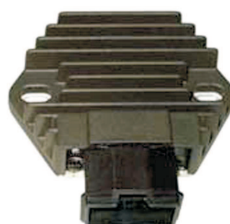
V-07355



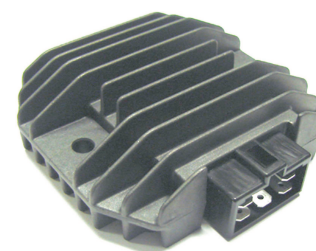
V-12817



V-07153



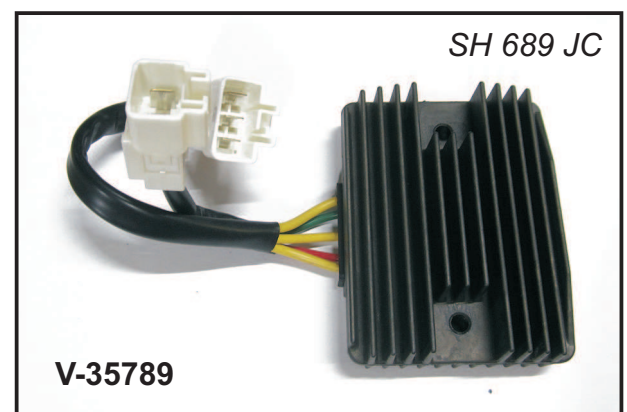
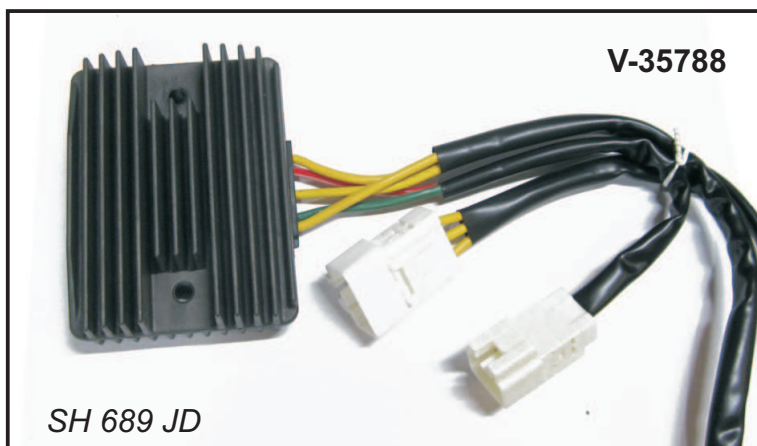
V-08139



V-18096

Regler für italienische Scooter

Fahrzeug	ccm	Bezeichnung	Bj.	Regler
APRILIA				
	850	SRV i.e.	12-18	V-35788
PIAGGIO				
	125	Beverly	10-16	V-35789
	300	Beverly	12-15	V-35789
	300	Beverly	16-20	V-35788
	350	Beverly	12-21	V-35788
MP3	125	ie	09-13	V-35789
MP3	300	LT	14-17	V-35788
oder				
MP3	300	LT	10-21	V-35789
MP3	300	RL	12-17	V-35789
MP3	350	Sport	18-21	V-35789
MP3	500	LT	15-17	V-35788
MP3	500	LT	18	V-35789
MP3	500	Business	17-20	V-35789
MP3	500	Sport	17-20	V-35789
X7	125		09-14	V-35788
X7	300		10-12	V-35788
X10	125		12-16	V-35788
X10	350		12-16	V-35788
X10	500		12-16	V-35788
VESPA				
GTS	125	ie	10-16	V-35789
GTS	300	ie	08-20	V-35789
GTV	300	ie	10-13	V-35789
GTV	300	ie	17-19	V-35789





V-18635 max. 75 Watt

z.B.

Puch Lido 80-87 12V

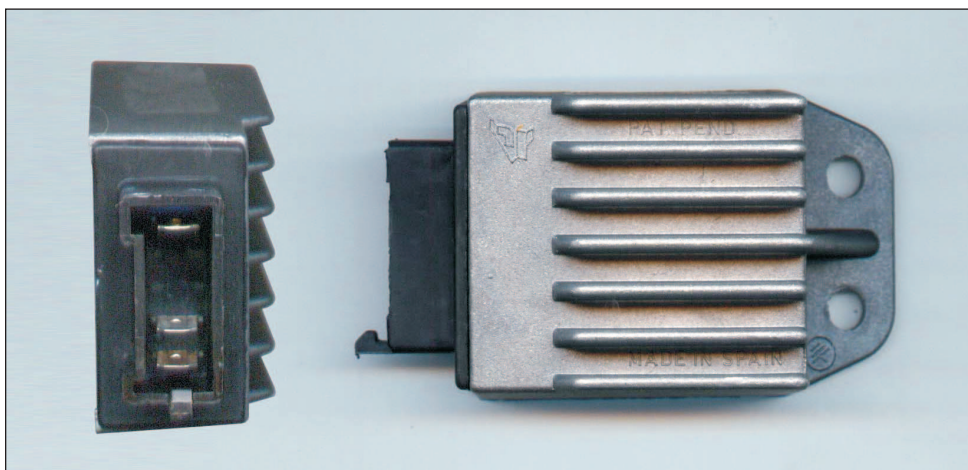
CS50
SL 50
SE80

Regler MO 42

3polig

V-21136 Regler Derbi Senda

Derbi Senda R / H-99



Regler MO 66

V-08736 Regler MO 66

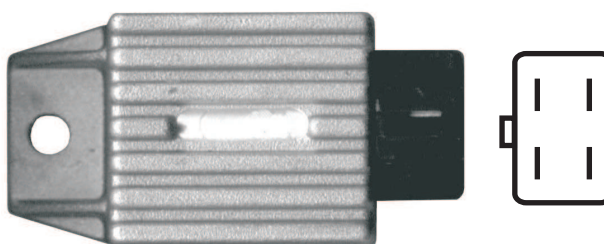


Anschlüsse:

4x 6,3mm Flachstecker

Regler MO 67

V-08737 Regler MO 67



Anschlüsse:

4x 6,3mm Flachstecker